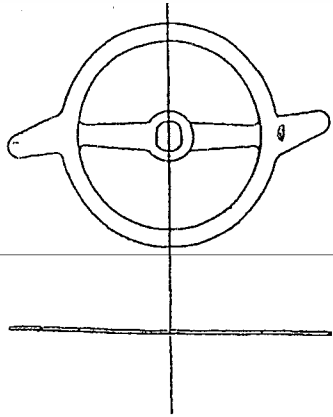
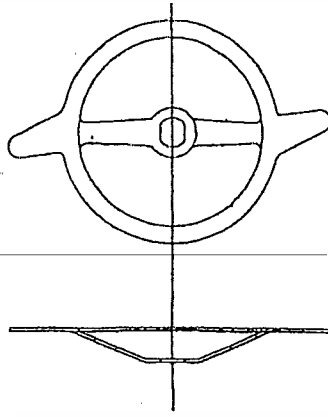


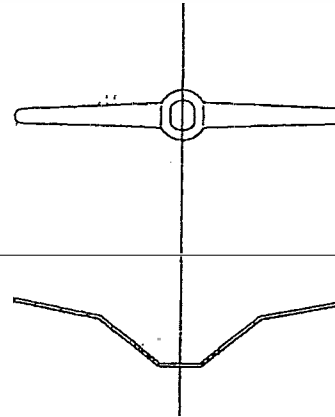
Upper blades shape



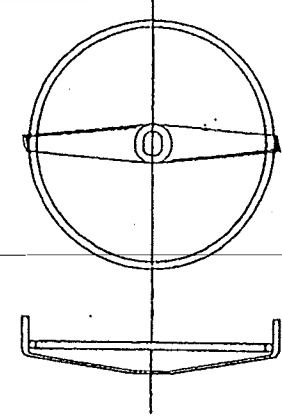
<S type: Standard>



<SI type: Option>



<V type: Option>



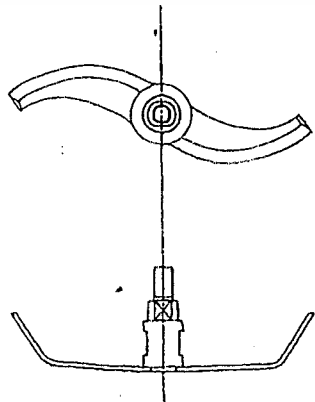
<KV type: option>

Used for materials with low bulk density and poor flow to the center when the blades are rotated.

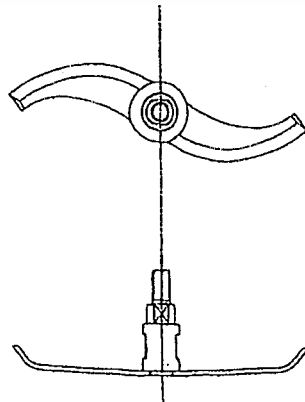
It is used for materials that have a large amount of clay and adhere to the top of the tank when the blades are rotated and lose fluidity.

Used for materials that cannot be kneaded with regular blades.

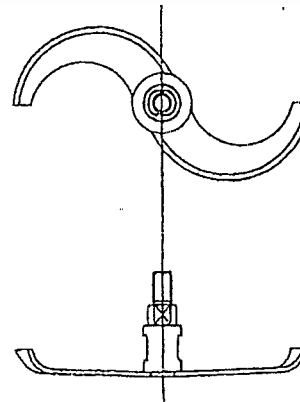
Bottom blades shape



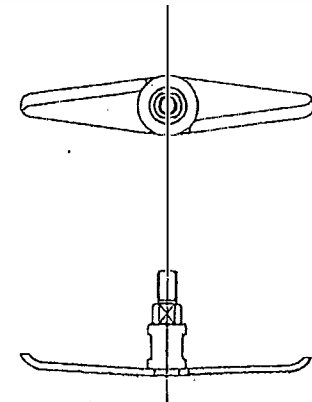
<B type: standard>



<BL type: Option>



<D type: Option>



<FP type: Option>

It is used when the standard B type has a sizable shear effect.

Used for materials with low bulk density. It is also used when you want to suppress the temperature rise.

Combine with SI and KV-type upper blades to improve kneaded effectiveness.